

# ROCO WINERY

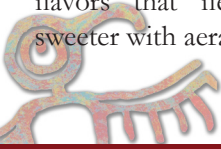
2015 Gravel Road Pinot Noir  
Willamette Valley AVA

90 pts

*Vinous*

“Rudy-red. Cherry pit, cola, licorice and a peppery note on the deeply perfumed nose. Chewy and focused on the palate, offering bitter cherry and blackberry flavors that flesh out and become sweeter with aeration.”

- Josh Reynolds, 1/18



# ROCO WINERY

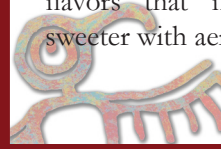
2015 Gravel Road Pinot Noir  
Willamette Valley AVA

90 pts

*Vinous*

“Rudy-red. Cherry pit, cola, licorice and a peppery note on the deeply perfumed nose. Chewy and focused on the palate, offering bitter cherry and blackberry flavors that flesh out and become sweeter with aeration.”

- Josh Reynolds, 1/18



# ROCO WINERY

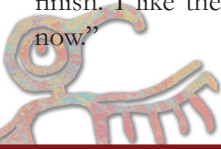
2015 Gravel Road Pinot Noir  
Willamette Valley AVA

93 pts

*James Suckling*

“This pinot noir shows blueberries, raspberries, cherries and hints of hazelnuts. Medium body, velvety and ripe tannins and a beautiful and long finish. I like the finesse here. Delicious now.”

- James Suckling, 12/17



# ROCO WINERY

2015 Gravel Road Pinot Noir  
Willamette Valley AVA

93 pts

*James Suckling*

“This pinot noir shows blueberries, raspberries, cherries and hints of hazelnuts. Medium body, velvety and ripe tannins and a beautiful and long finish. I like the finesse here. Delicious now.”

- James Suckling, 12/17

